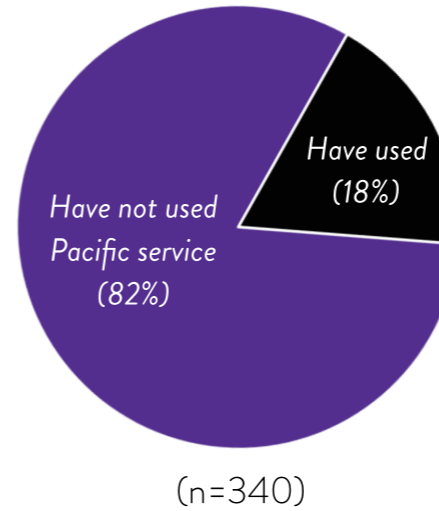
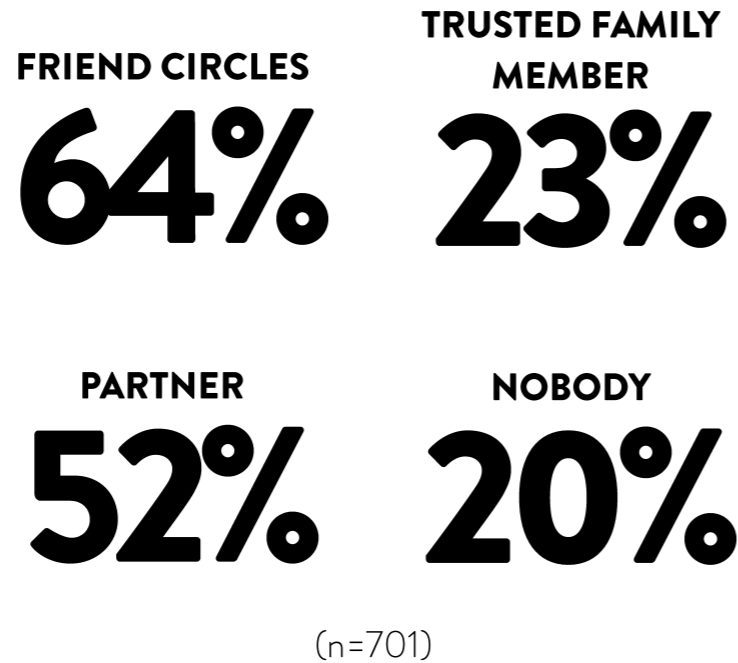


MANALAGI COMMUNITY SURVEY INFOGRAPHIC:

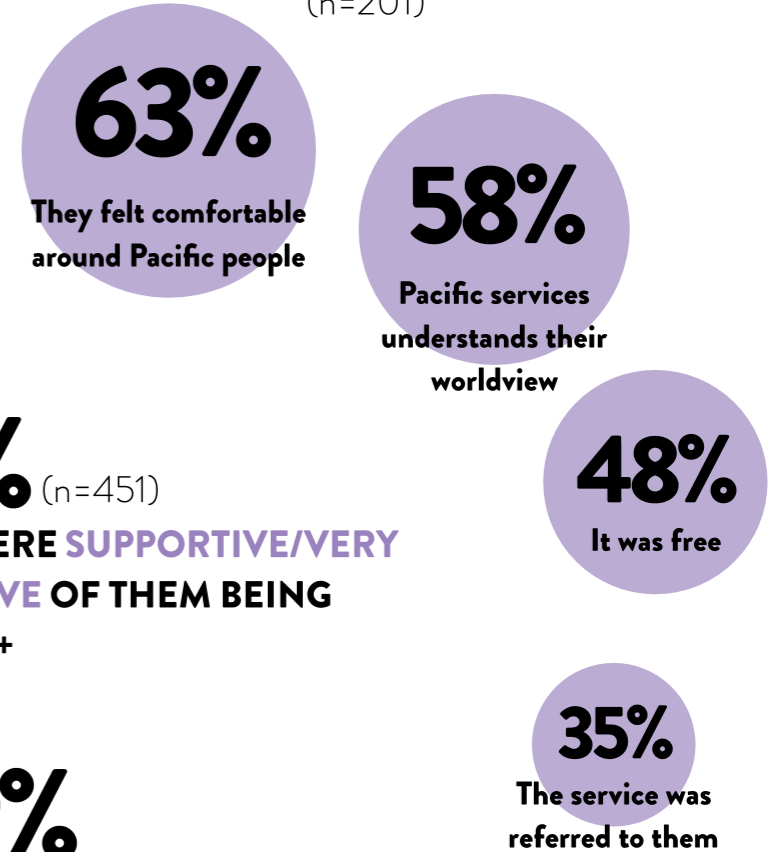
SUPPORT SYSTEMS AND FAMILY

WHEN UNDER MENTAL HEALTH DISTRESS, RESPONDENTS WOULD SEEK SUPPORT FROM

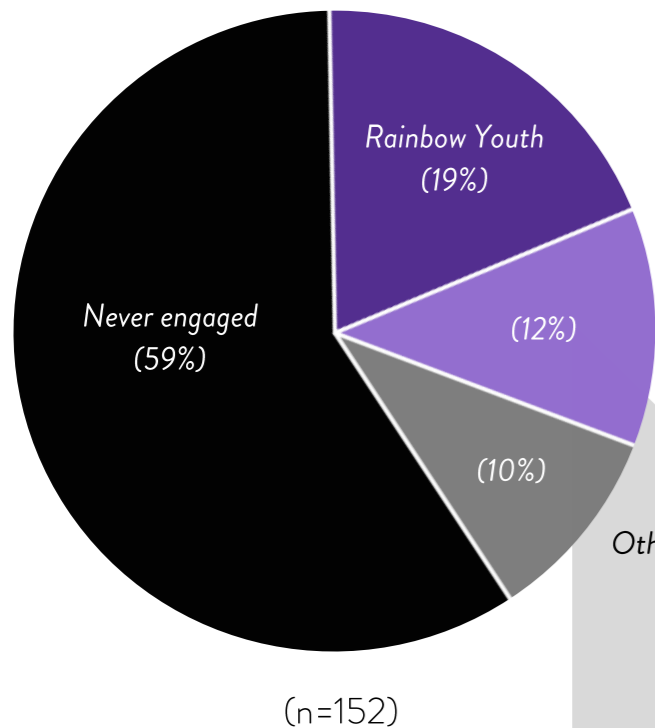


Respondents who have used a Pacific service before reported that they used it because:

(n=201)



54% (n=451) FAMILY WERE SUPPORTIVE/VERY SUPPORTIVE OF THEM BEING RAINBOW+



Most respondents have never engaged with a Rainbow+ provider. But for those who do, they seek help mainly for support with mental health and family.

F'INE Pasifika Aotearoa

Those who had not used a Rainbow+ service before had no need or were mostly unaware they existed.

89% (n=334) HAD DISCLOSED THEIR RAINBOW+ IDENTITY TO OTHERS

20% (n=215) OF THOSE WHO CAME OUT, TOLD THEIR MOTHER FIRST

60% (n=370) INDICATED THAT THEIR FAMILY IS DEPENDENT/VERY DEPENDENT ON THEM FOR SUPPORT

55% (n=283) INDICATED THEY DID NOT HAVE A COMING OUT

36% (n=58) OF THOSE WHO DIDN'T COME OUT FEARED DISOWNMENT

14% (n=333) INDICATED THEY HAD BEEN SUBJECTED TO CONVERSION THERAPY